

Promotion and Market Development Committee
7th meeting
5 March 2014
London, United Kingdom

**Gradings results for Arabica and
Robusta coffees
Calendar years 2005 to 2013**

Background

1. The promotion of quality as a means to enhance sustainability of the coffee economy by increasing consumption, by adding value and providing consumer satisfaction is a primary objective of the Coffee Quality-Improvement Programme – CQP – (see document ICC-90-9).
2. In order to provide additional information on the quality of coffee exports, the Organization monitors the results of gradings on futures exchanges. This document shows these results based on the information extracted from the websites of the Intercontinental Exchange (ICE) for Arabica coffee and on the NYSE Liffe exchange for Robusta coffee in calendar years 2005 to 2013.
3. The previous report on the gradings results for Arabica and Robusta coffees in the New York and London futures markets is contained in document PM-27/13.

Action

The Promotion and Market Development Committee is requested to take note of this report.

GRADINGS RESULTS FOR ARABICA AND ROBUSTA COFFEES CALENDAR YEARS 2005 TO 2013

1. The gradings results for Arabica coffee on the Intercontinental Exchange (ICE) and on the NYSE Liffe for Robusta coffee are systematically monitored by the Organization through the results posted on their websites. This report gives the results of these gradings analyses for the last nine calendar years since the CQP was established back in June 2004.

Gradings results for Arabica coffee

2. Reports on the Coffee 'C' contract gradings analysis are regularly posted on the ICE website showing the monthly summary and year-to-date data on the pass/fail results by origin. The analysis also shows the percentage pass in the original gradings, in addition to the overall pass on grade, cup and colour quality achieved. Table 1 shows a summary of the results for each category in calendar years 2005 to 2013.

**Table 1: ICE analysis results
Calendar years 2005 to 2013**

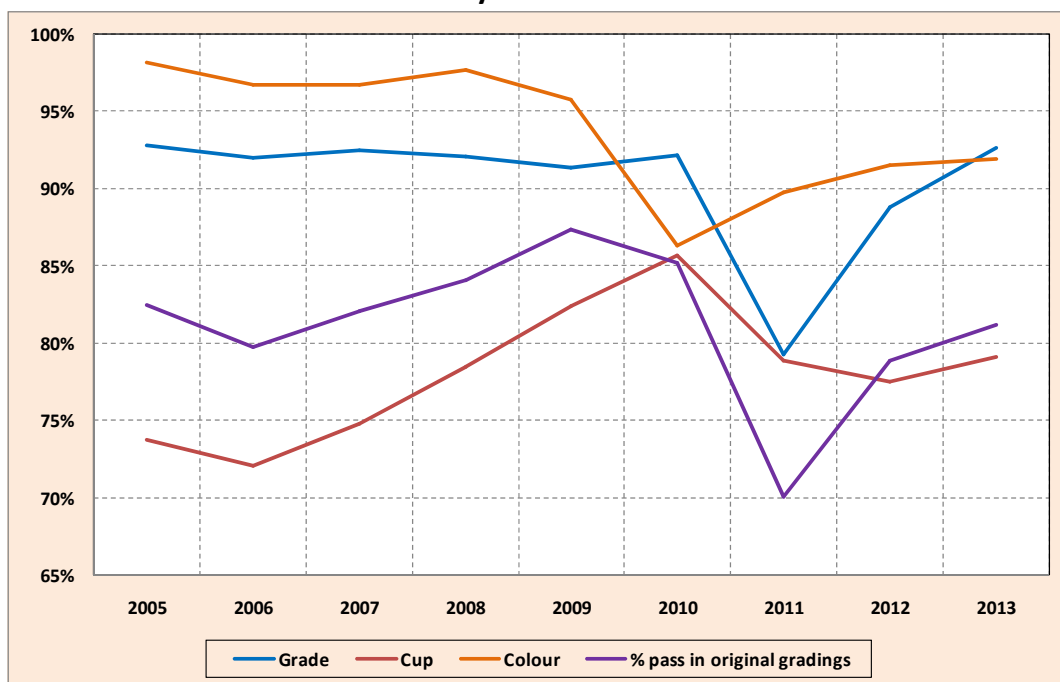
Table 1									
Coffee "C" gradings analysis by ICE									
Calendar years 2005 to 2013									
	2005	2006	2007	2008	2009	2010	2011	2012	2013
% pass in original gradings	82.46%	79.72%	82.07%	84.05%	87.31%	85.18%	70.04%	78.83%	81.16%
Grade	92.82%	92.01%	92.48%	92.05%	91.38%	92.18%	79.23%	88.78%	92.64%
Cup	73.78%	72.10%	74.80%	78.50%	82.38%	85.68%	78.87%	77.53%	79.09%
Colour	98.15%	96.68%	96.73%	97.70%	95.76%	86.31%	89.75%	91.52%	91.89%

3. The period-average rates achieved in the analysis by category can be summarized as follows:

Table 2: ICE analysis – average % pass in original gradings

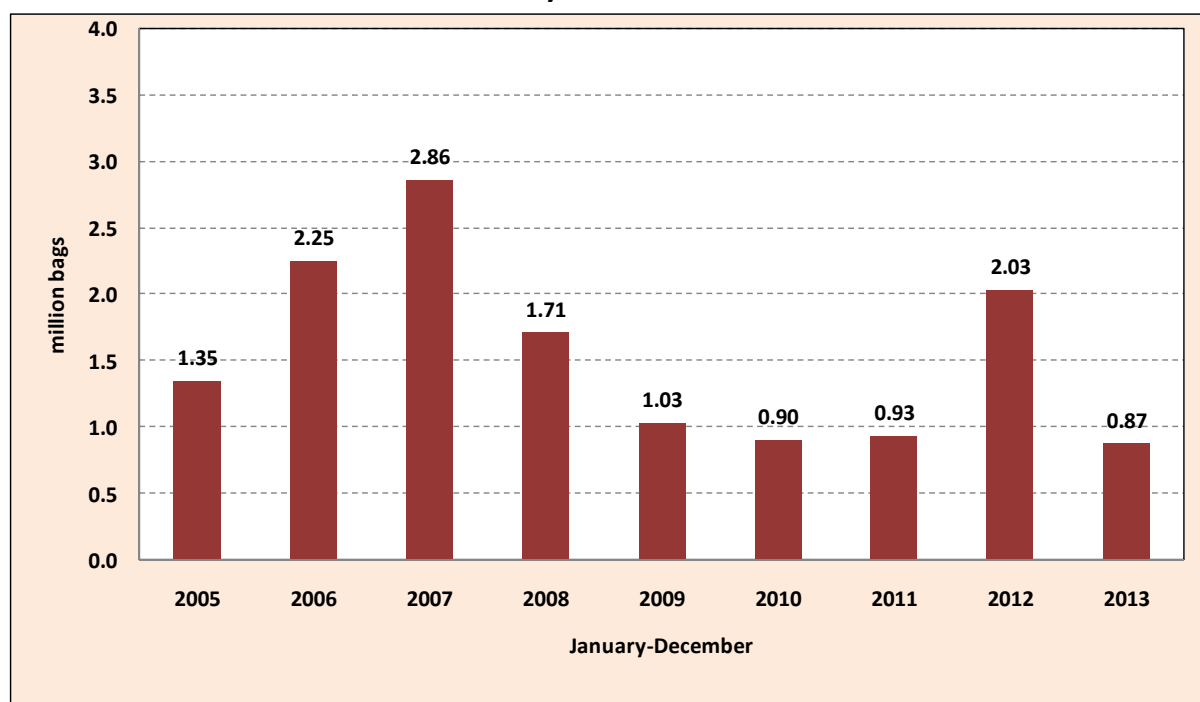
	2005-2013 average
Overall pass in original gradings	81.2%
Grade	90.4%
Cup	78.1%
Colour	93.8%

**Graph 1: ICE analysis results
Calendar years 2005 to 2013**



4. Graph 2 shows the volume graded by ICE by calendar year from 2005 to 2013. It should be noted that a record volume of 2.86 million bags were graded in 2007 whereas the lowest volume graded in the period took place in 2013.

**Graph 2: ICE gradings by volume (60-Kg bags)
Calendar years 2005 to 2013**



Gradings results for Robusta coffee

5. Table 3 shows the volume of coffee graded by NYSE Liffe during the nine calendar years (2005 to 2013) since the introduction of the CQP in June 2004.

**Table 3: NYSE Liffe analysis results – volume in 60-Kg bags
Calendar years: 2005 to 2013**

	January-December		
	total graded	below CQP	% out CQP
2005	2 002 083	1 860 833	92.9%
2006	1 916 417	1 621 500	84.6%
2007	2 287 167	1 721 833	75.3%
2008	2 643 000	2 032 250	76.9%
2009	3 667 167	614 333	16.8%
2010	776 500	201 000	25.9%
2011	4 129 333	893 000	21.6%
2012	722 167	40 000	5.5%
2013 1/	807 500	14 333	1.8%
Total	18 951 333	8 999 083	47.5%
Average	2 105 704	999 898	47.5%

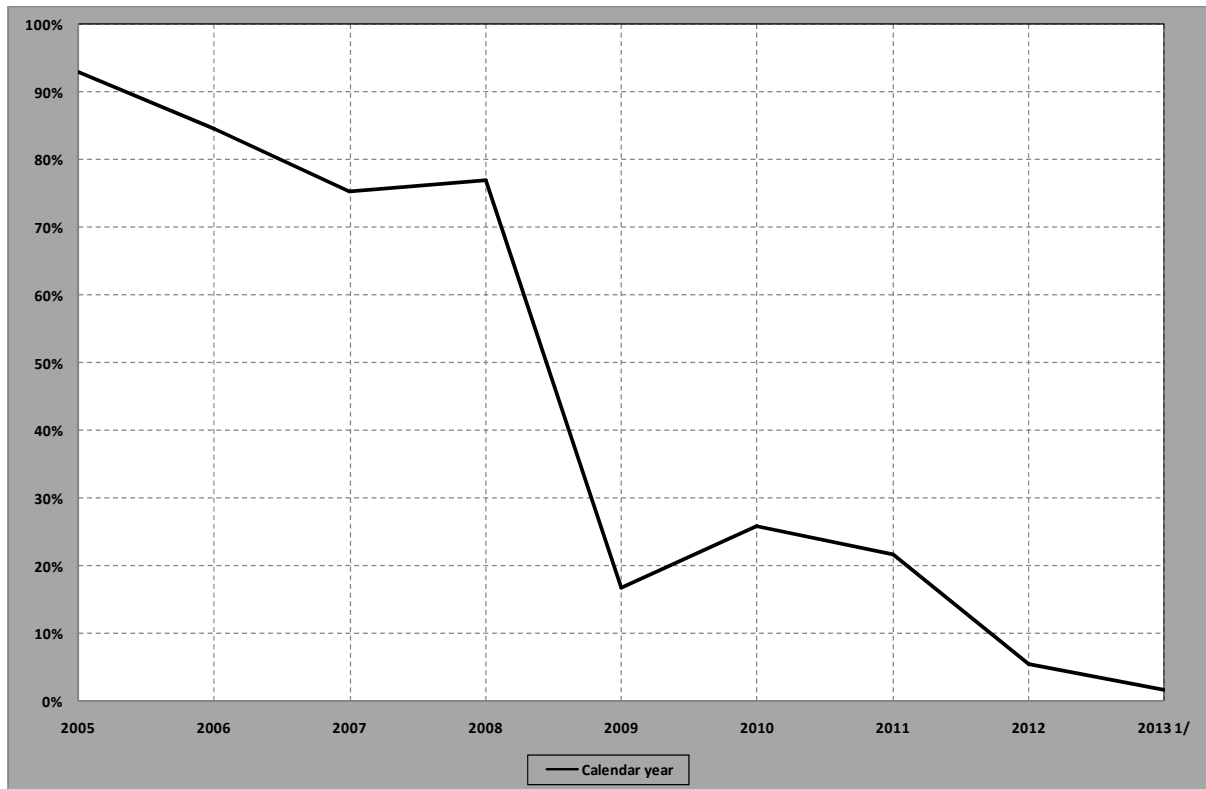
1/ Includes January-July and November

6. The average volume deemed to be below the CQP standards graded from 2005 to 2013 amounts to 9 million bags, equivalent to 47.5% of the total volume graded.

7. Graph 3 shows the percentage gradings deemed to fall outside the CQP standards in calendar years 2005 to 2013. It should be noted that the volume deemed to be below the Resolution standards since 2012 has fallen dramatically to levels well below 10% which appears to indicate an improvement in the quality of the Robusta coffee graded.

8. In 2009 the premium grade 'P' for coffee that exceeds the usual classification standards from grades '0' to '4' was introduced. Some 450,667 bags have been awarded this premium grade since the introduction of this classification. In 2013 no coffee has been classified as 'premium grade'.

Graph 3: NYSE Liffe gradings
Percentage graded deemed to be below the CQP



9. The Organization will continue to monitor the gradings results for Arabica and Robusta coffee as posted on the ICE and NYSE Liffe websites.