

# Global Environment Facility

2018-2022

## Food Systems, Land Use and Restoration Impact Program



GLOBAL ENVIRONMENT FACILITY  
INVESTING IN OUR PLANET

[www.theGEF.org](http://www.theGEF.org)

# What is the Global Environment Facility (GEF) ?

## 1- Financial Mechanism of the Environmental Multilateral Agreements



## 2- Global Partnership

183 countries

GEF Focal Point



### 18 Implementing Agencies



+ Private sector, Academic institutions...

## 3- Massive Track record of projects

- GEF created in **1991**
- **Over \$17.9 billion in grants** + \$93.2 billion in co-financing
- More than **4500 projects** in **170 countries**.



**GLOBAL ENVIRONMENT FACILITY**  
INVESTING IN OUR PLANET

# New GEF-7 cycle beginning now!

- GEF 7 commenced on **July 1, 2018**
- The total envelope approved is **4.1 Billion USD**.

Country Driven Process

\$\$\$=Country allocation



GLOBAL ENVIRONMENT FACILITY  
INVESTING IN OUR PLANET

# GEF7 Programming Framework

	Biodiversity Focal Area	Climate Change Focal Area	Land Degradation Focal Area	International Waters Focal Area	Chemicals and Waste Focal Area
	<b>Programming Areas to be addressed through Focal Area Investments</b>				
	<ul style="list-style-type: none"> <li>• Biodiversity mainstreaming</li> <li>• Wildlife for sustainable development</li> <li>• Natural capital</li> <li>• Agrobiodiversity</li> <li>• Inclusive conservation</li> <li>• Invasive species</li> <li>• Protected areas</li> <li>• Preventing species extinction</li> <li>• Biosafety</li> <li>• ABS</li> <li>• Enabling Activities</li> </ul>	<ul style="list-style-type: none"> <li>• CBIT</li> <li>• Enabling Activities</li> <li>• Technology Transfer</li> <li>• NDC preparation and implementation</li> <li>• Sustainable energy</li> </ul>	<ul style="list-style-type: none"> <li>• Creating Enabling Environments for LDN</li> <li>• Enabling Activities</li> <li>• LDN Target setting</li> </ul>	<ul style="list-style-type: none"> <li>• Strengthening Blue Economy Opportunities</li> <li>• Improve Governance in ABNJs</li> <li>• Enhancing Water Security in Freshwater Ecosystems</li> </ul>	<ul style="list-style-type: none"> <li>• Industrial Chemicals</li> <li>• Agricultural Chemicals</li> <li>• LDC/SIDS support</li> <li>• Enabling Activities</li> </ul>

**+ 50 % \$\$\$ incentive!**



## **GEF-7 New Flagship Program:**

# **Food Systems, Land Use and Restoration Impact Program**



**GLOBAL ENVIRONMENT FACILITY**  
INVESTING IN OUR PLANET

[www.theGEF.org](http://www.theGEF.org)

# What needs to happen?

- Develop efficient and effective food value chains:
- Remove deforestation from commodity supply chains
- Expand restoration of degraded lands
- Provide Global Environment Benefits



Underpinned by: **Comprehensive land use planning** that reconciles competing land use, considers trade-offs, and harnesses synergy.



GLOBAL ENVIRONMENT FACILITY  
INVESTING IN OUR PLANET



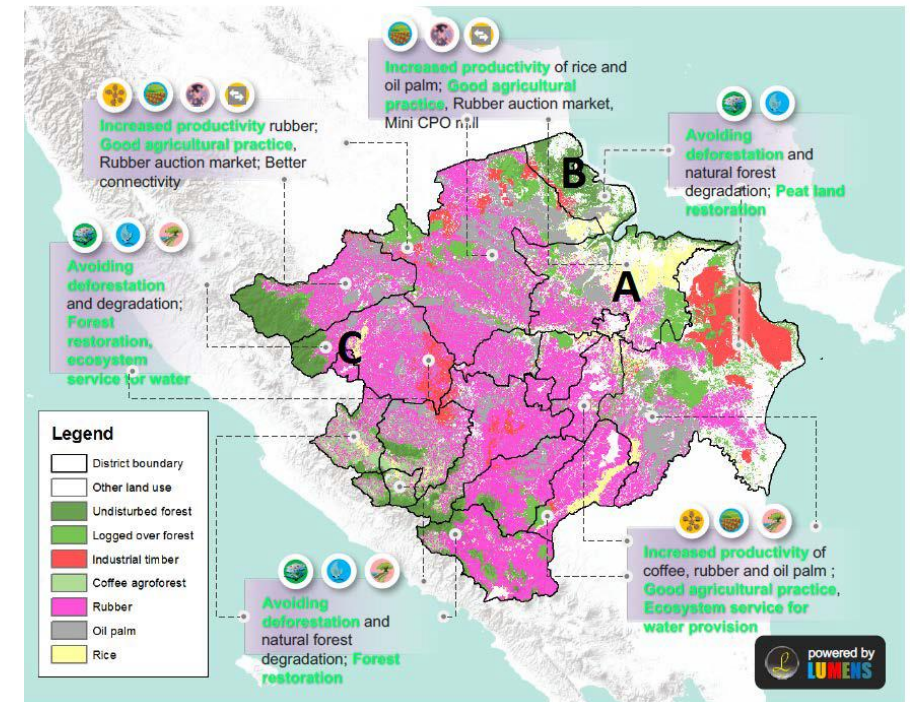
# The how: Supply Chain Approach



# The target: Sustainable Integrated Landscapes

**Spatially explicit geographies where food and ecological systems are integrated, requiring implementation at scale of a suite of related strategies and interventions, and demonstrating the following characteristics:**

- **Evidence of environmental threat** from commodity driven deforestation or unsustainable agricultural systems
- **Potential for applying a comprehensive land use approach** linking production, biodiversity conservation, and restoration at scale
- **Willingness to work across national borders** for supply chain needs and other market driven demands.



## Focus on **Comprehensive Land Use Planning**

- To balance demands for increased food production with potential for harnessing ecosystem services
- Improve targeting of landscapes for delivering integrated solutions at scale



**gef** GLOBAL ENVIRONMENT FACILITY  
INVESTING IN OUR PLANET

[www.theGEF.org](http://www.theGEF.org)



# The Entry Points for Countries

- **Globally important tropical forest country and major producer of a global commodity** (i.e. oil palm, beef, soy, **coffee**, and cocoa) + Commitment to taking deforestation out of the supply chain, restore degraded lands, protect high value BD and CS forests.

**OR**

- **Globally important food crop (e.g. rice, wheat, maize, cassava) or livestock production systems** + Commitment to increase the sustainability, efficiency and effectiveness in the food system, restore degraded lands for production and halt encroachment into intact ecosystems.

**PLUS**

- The agriculture and/or food sector has been identified by the country as a major target to fulfill commitments under the MEAs that GEF serves (for CCM, BD, SLM and C&W)
- The country has established targets for landscape restoration, including commitments under an existing global initiatives (Bonn Challenge, AFR100, 20X20, etc.)



# Financing Criteria

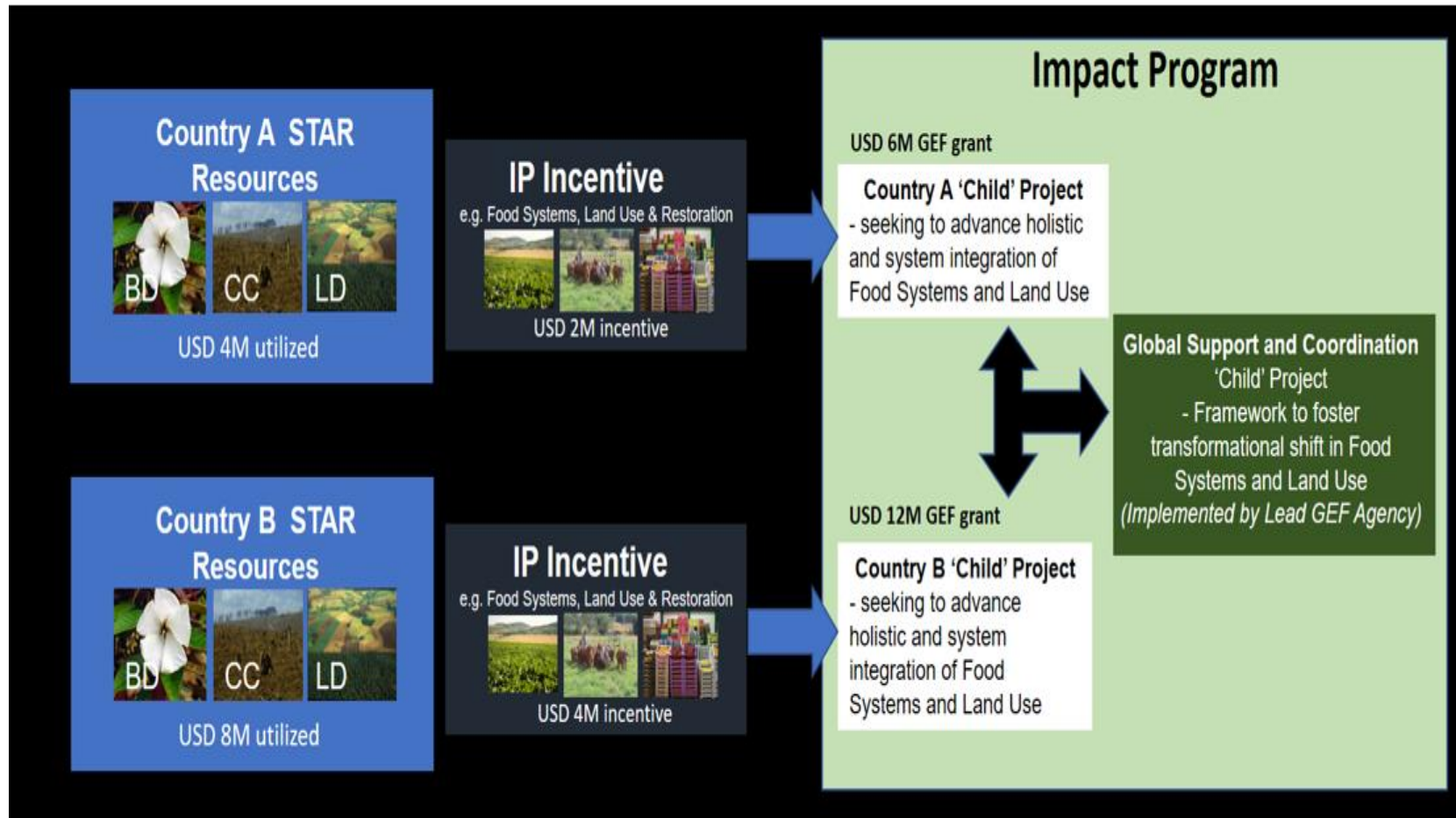
**GEF financing to projects will be prioritized by their:**

1. High potential/ability to generate multiple GEBs (GHG, BD, LD) and the significance that these represent in terms of contribution to delivery of GEF core indicator targets
2. Contribution to wider national/sub-national strategies and alignment with existing comprehensive land use plans
3. Public sector support (policy and institutional) and demonstrated political will of key government actors
4. Private sector involvement (markets and financing)
5. Potential for achieving large-scale change
6. Ability to catalyze innovations generated in technology, policy, governance, financing, and business models.



**GLOBAL ENVIRONMENT FACILITY**  
INVESTING IN OUR PLANET

# The Incentive: Resource Allocation to Impact Programs



## Resources (million \$)

STAR	265
Matching incentive	133
Global support	32
<b>Total</b>	<b>430</b>

**Co-financing: 1/7**



# Timeline and Process for Operationalizing the Impact Programs

- GEF Assembly on 26-28 June, GEF-7 Programming Directions adopted
- STAR Allocations published on July 1st
- 30 August 2018: guidance note on programming IPs
- September 2018: Consultation workshop with Implementing Agencies
- **15 October 2018**: release of a call and template for “Expression of Interests” (EOIs) for participation in the IPs
- **30 December 2018**: Initial deadline for submission of EOIs
- By end January 2019: Selection of an initial batch of submissions for each of the Ips
- May-June 2019 Council meeting: Inclusion in the Work Program (if resources allows)
- Late 2019: additional deadline for new EOIs submission



GLOBAL ENVIRONMENT FACILITY  
INVESTING IN OUR PLANET

**Thank you for your attention!**

*Pascal Martinez*  
*Sr. Climate Change Specialist*



**GLOBAL ENVIRONMENT FACILITY**  
INVESTING IN OUR PLANET