



The global challenges  
of tomorrow drive our work  
today. We shape sustainable  
development worldwide.

GIZ Presentation  
Partnership Fair  
122nd International Coffee Council  
September 19, 2018, London

Jonas Dallinger  
Advisor Sustainable Supply Chains  
and Standards, GIZ GmbH



## Content

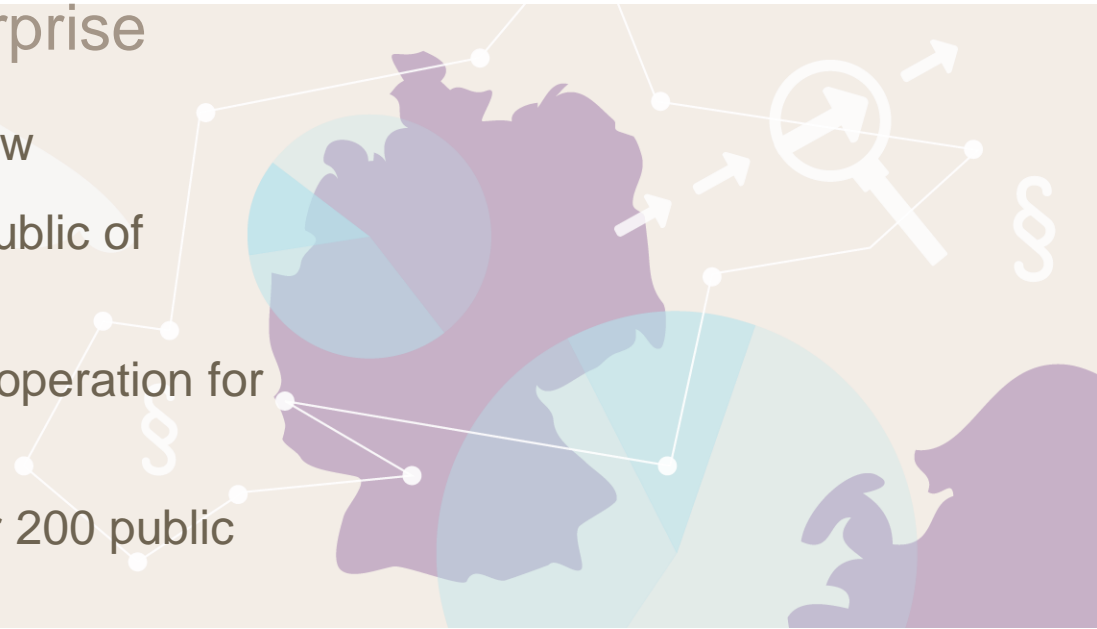
- ✓ Company Profile
- ✓ Program Sustainable Supply Chains and Standards
- ✓ Overview of GIZ Work in the Coffee Sector
- ✓ Ways to Cooperate with GIZ



## GIZ profile

### A German federal enterprise

- A company under private law
- Owned by the Federal Republic of Germany
- Services in International cooperation for sustainable development
- Commissioned by well over 200 public and private-sector bodies
- Supports the objectives of the German Government

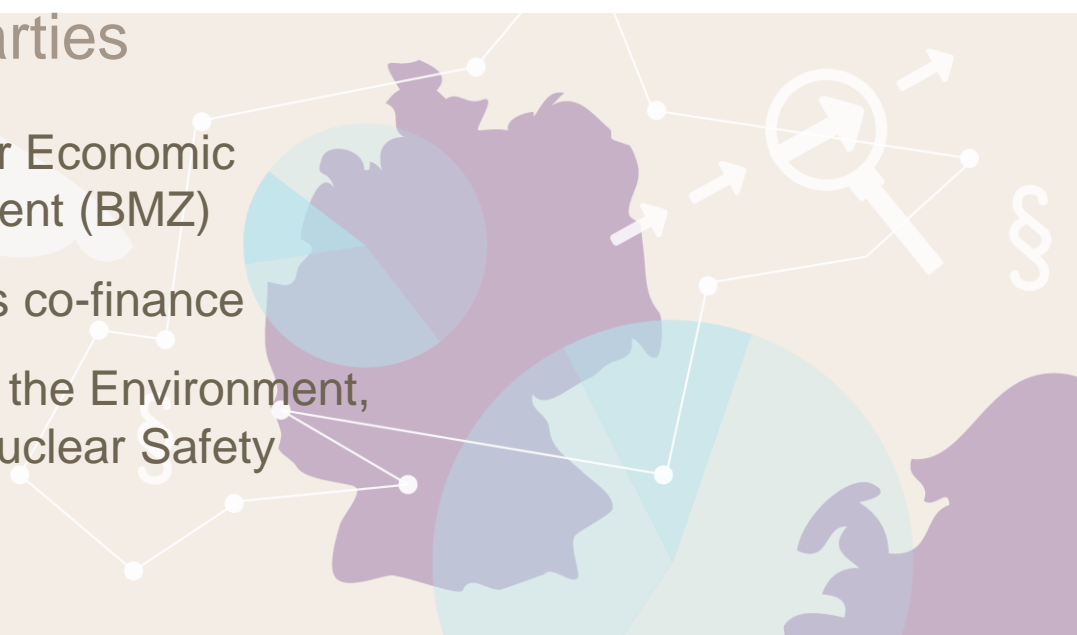




## GIZ profile

### Main commissioning parties

- German Federal Ministry for Economic Cooperation and Development (BMZ)
  - 80% of income, includes co-finance
- German Federal Ministry of the Environment, Nature Conservation and Nuclear Safety
- Partner Governments
- International Organizations
- Foundations
- Private Sector companies





## GIZ profile

### Facts and Figures

- Business volume of over EUR 2.6 billion in 2017
- Operations in Germany and over 120 countries around the world
- 19,500 employees (70% in partner countries)
- Over 3,750 staff in Germany
- Main offices in Bonn and Eschborn



# Program Sustainable Supply Chains and Standards

## Areas of work

- Policy advise to Ministry of Economic Cooperation and Development
  - Division 121: international agriculture policy, agriculture, innovation
- Internationally traded products: Bananas, Cocoa, Coffee, Cotton, Palm Oil, Rubber, Soy
- Sustainable agriculture products on (German) market
  - Multi-Stakeholder Partnerships
  - Establish Deforestation Free Sourcing Regions
  - Living Income





## Current GIZ activities in the coffee sector

- **Program Sustainable Supply Chains and Standards**
  - Policy Advise
  - Initiative: tax exemption for sustainably produced and fairly traded coffee
  - Support to Global Coffee Platform - Kenya
- **Cooperation with the Private Sector**
  - Strategic Alliance Uganda, Access to finance, farm management
  - Strategic Alliance in Southeast-Asia, good agriculture practices, access to services
  - PPP Peru, Coffee Cherry Tea





## Current GIZ activities in the coffee sector

- **Bilateral projects funded by BMZ**
  - Mostly on rural development, natural resource management, employment
  - Several projects in a.o. Ecuador, Ethiopia, Guatemala, Myanmar, Sierra Leone, Togo
- **Bilateral projects funded by BMUB**
  - Carbon neutral coffee in Costa Rica







## Main ways to cooperate

- **Bilateral Projects**
  - In development cooperation through BMZ
  - Under International Climate Initiative through BMUB
  - Regular government negotiations
- Accessing **international climate finance**
  - Green Climate Fund
  - NAMA Facility
- **Public Private Partnerships** through BMZ - GIZ, KfW, DEG
- **Global / Sector Projects**
  - Testing new approaches, research, innovation





**Thank you for your  
attention!**

**Questions?**

[Jonas.dallinger@giz.de](mailto:Jonas.dallinger@giz.de)